

NEWS RELEASE

FOR IMMEDIATE RELEASE:

Sept. 29, 2020

CONTACT:

Nancy Nydam
404-657-2462

DPH Provides Update on COVID-19 Trends in Georgia

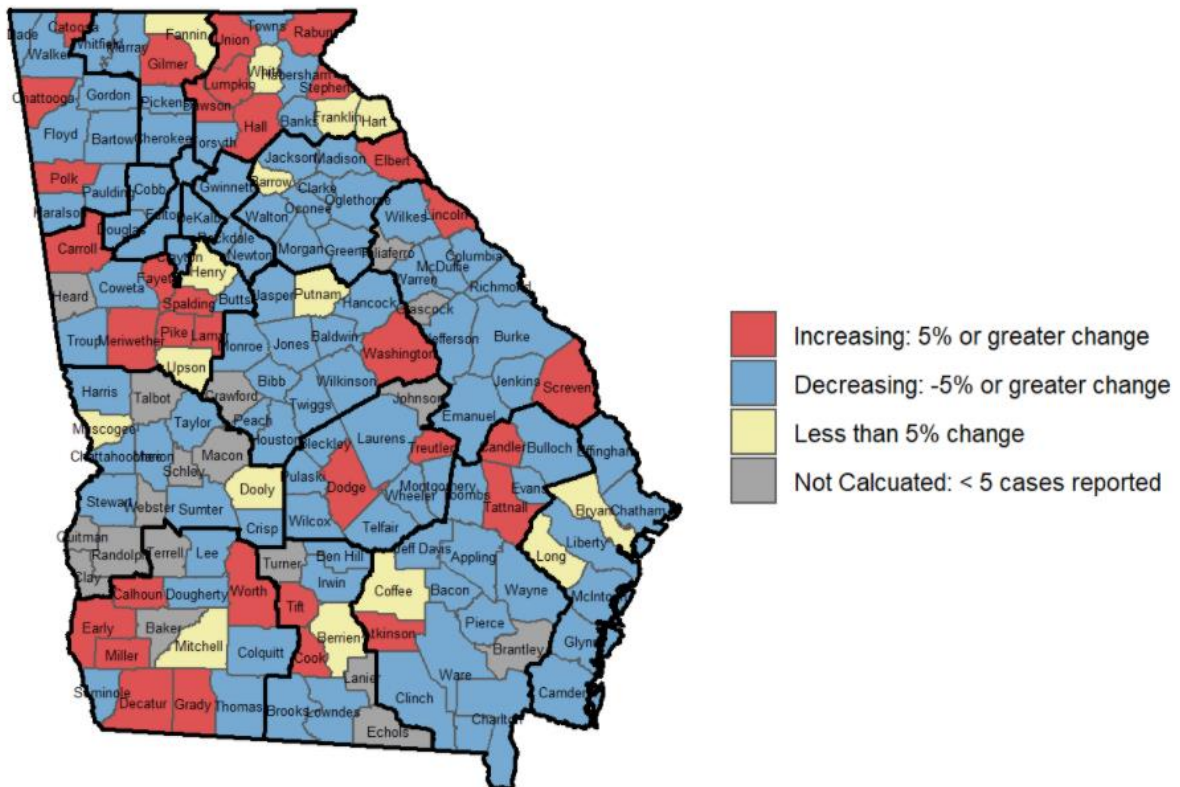
Atlanta – The Georgia Department of Public Health (DPH) is providing the following information regarding the fight against COVID-19 in Georgia:

COVID-19 Cases

- From **9/21 to 9/28**, the seven-day average of new cases reported **decreased 30.4%**.
- The seven-day average of new cases reported is **down 67.7%** from our peak July 24.
- We are seeing decreases in many areas of the state in both case counts and percent PCR positivity.

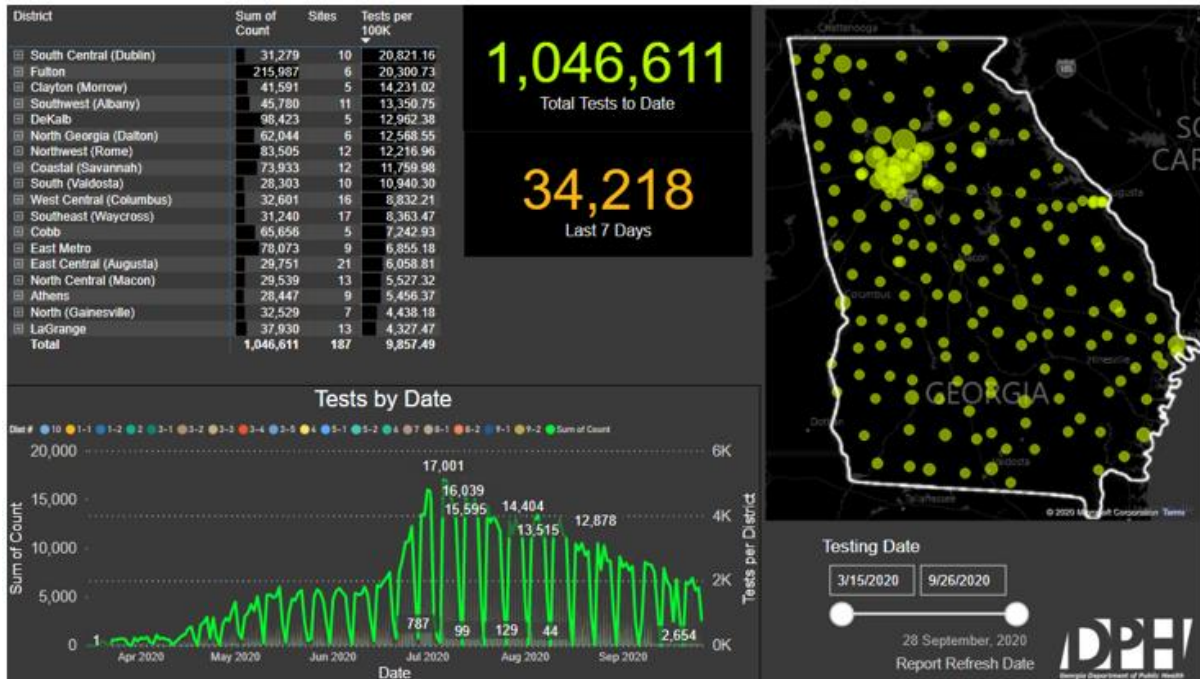
Confirmed COVID-19 Cases

Percent Change 09/12-09/18, 09/19-09/25



COVID-19 Testing

Georgia SPOCs



- As of Sept. 28, the state reported 2.9 million (cumulative) COVID-19 tests reported to DPH through Electronic Laboratory Reports (ELR).
- The number of specimens collected at DPH SPOCs is **1,046,611**
- DPH is operating 187 SPOCs, including mobile and pop-up locations statewide.

Georgia will be receiving more than 3 million [Abbott Laboratories BinaxNow](#) rapid COVID-19 test kits by the end of the year. In his announcement, Governor Kemp said the tests will be used for K-12 schools, higher education, first responders and other critical areas of need.

The Governor's announcement can be found on Twitter [@GovKemp](#).

Positivity Rate

The statewide percent positivity (7-day moving average) for PCR tests has decreased from 10.3% on 9/21/20 to **6.3% on 9/28/20**. It is the lowest statewide positivity rate (7-day moving average) since June.

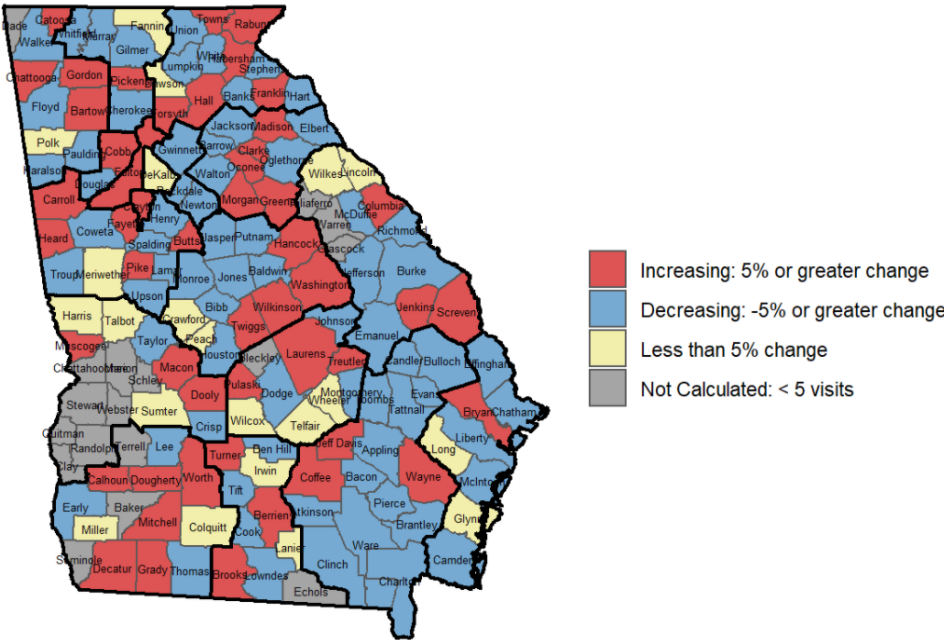
Hospitalizations

Daily hospitalizations for COVID-19 have decreased from 1,415 on Sept. 21 to 1,317 on Sept. 28, or a decrease of **7%** in the past week. Hospitalizations have decreased **58.8%** since a daily high of 3,200 July 30 of 3,200.

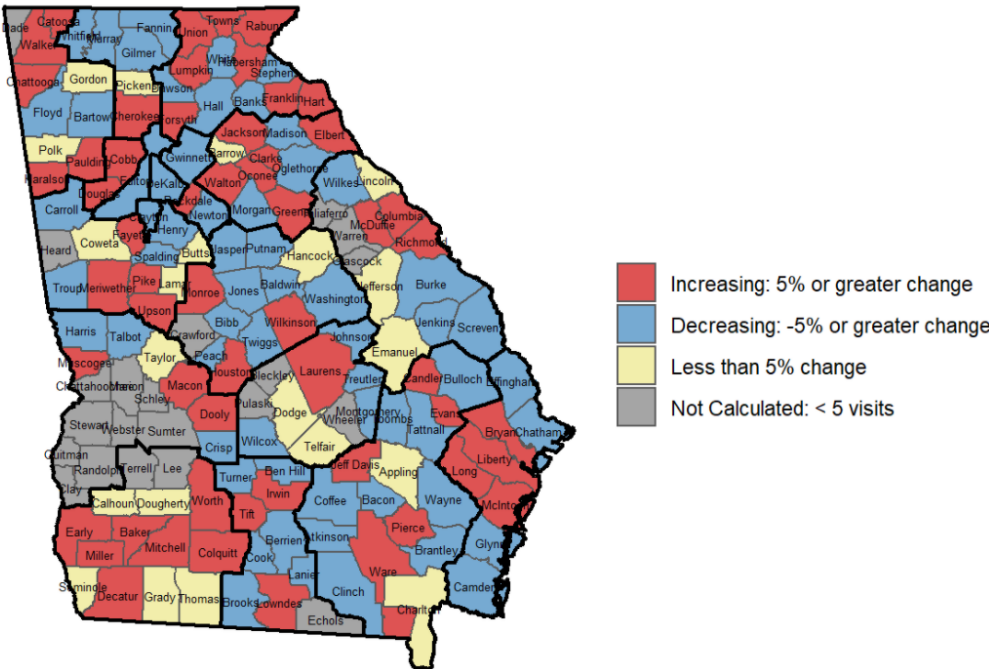
Emergency Department Visits

Emergency Department (ED) visits related to COVID-19 and ILI (influenza-like illness) have remained flat over the two week period Sept. 12-25.

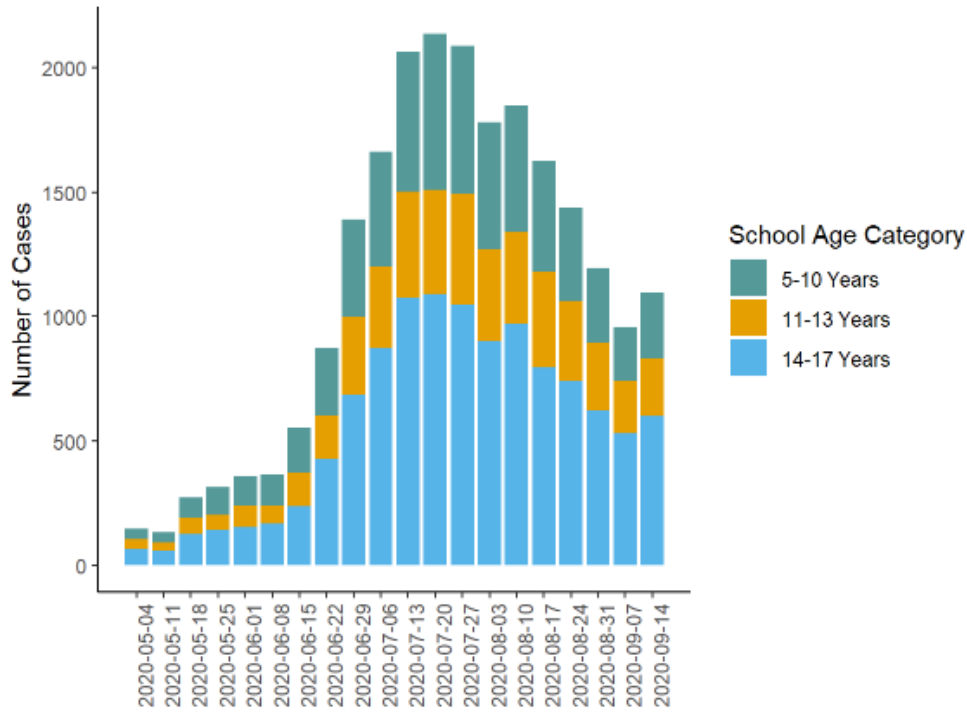
Emergency Department (ED) Visits with COVID-19 Syndrome
Percent Change 09/12-09/18, 09/19-09/25



Emergency Department (ED) Visits with ILI Syndrome
Percent Change 09/12-09/18, 09/19-09/25

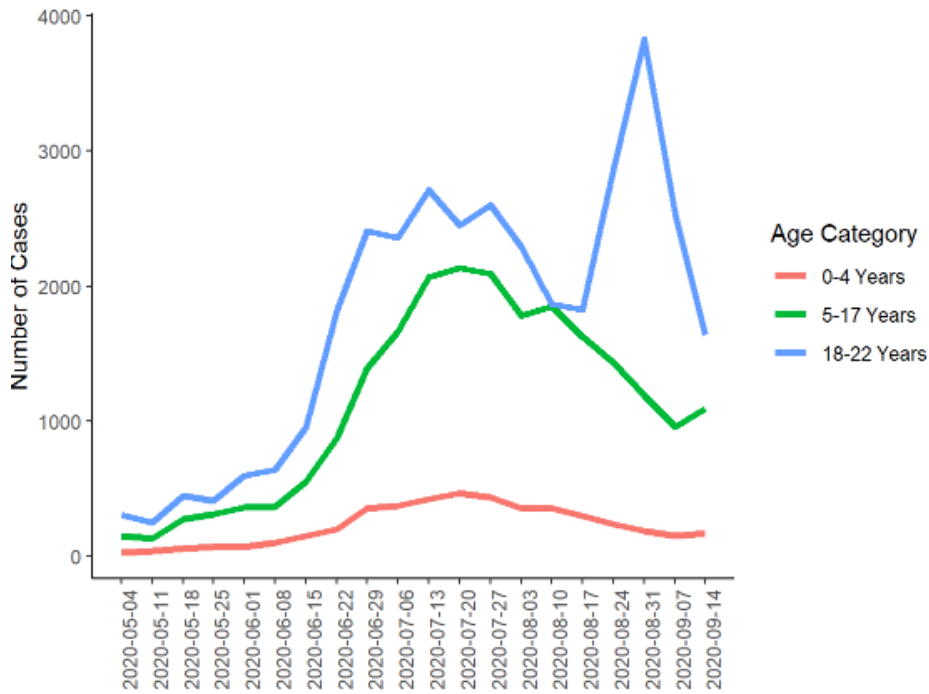


COVID-19 Cases Among K-12 School Aged Children*



*Report reflects Sept. 14-18

COVID-19 Cases by Age Category (Ages 0-22)*



*Report reflects week of Sept. 14-18

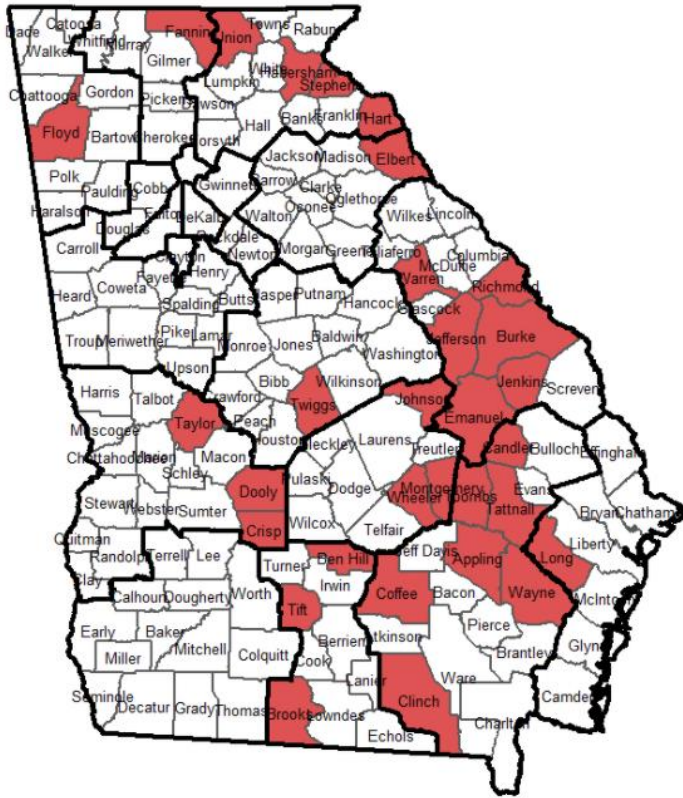
Outbreaks

Sept. 20-26: **106**

These outbreaks are occurring in settings where people are physically congregating and underscore the need for physical distancing and source control. The highest number of outbreaks occurred in schools, long-term care facilities, correctional facilities and workplaces.

Setting	9/20-9/26	Change from Previous Week	Grand Total
LONG-TERM CARE FACILITY/NURSING HOME	17	-7	739
SCHOOL	28	+10	306
PRISON/JAIL	10	n/c	223
WORKPLACE, NOT CAFETERIA	18	+13	216
MANUFACTURING FACILITY	6	n/c	163
RESTAURANT OR DELI	2	-1	87
CHURCH/TEMPLE	4	+2	79
DAY CARE CENTER	3	+1	78
OTHER CONGREGATE SETTING	4	n/c	72
OTHER	3	+3	61
FOOD PRODUCTION FACILITY	1	+1	53
HOSPITAL	4	+3	51
OFFICE SETTING	3	+1	40
OUTPATIENT (NON-DIALYSIS)			40
SHELTER	1	+1	38
GROCERY STORE	1	n/c	28
OTHER INPATIENT FACILITY/DETOX FACILITY			27
FARM			19
CONSTRUCTION SITE			17
MENTAL HOSPITAL			17
BAR/ENTERTAINMENT VENUE			13
FUNERAL	1	+1	11
CAMP			9
HOTEL			9
MILITARY FACILITY			7
DIALYSIS CENTER			6
COMMUNITY			5
WEDDING RECEPTION			5
PRIVATE HOME			4
RESORT			3
CONVENTION CENTER			1
PICNIC/COOKOUT/POTLUCK			1
SWIMMING POOL			1
UNKNOWN			1
WATER PARK			1
WORKPLACE CAFETERIA			1

Counties with High Transmission Indicators*



Counties of High Transmission Indicators represent Counties with [14-day cases rate is > 100 cases/100,000 county residents (> 5 cases during this period)] AND [14-day average % positive PCR tests > 10% (> 20 total tests performed during this period)].

*By county of residence, report reflects Sept.12-25

For updates on COVID-19, follow @GaDPH and @GovKemp on Twitter and @GaDPH and @GovKemp on Facebook.

For information about COVID-19, visit <https://dph.georgia.gov/novelcoronavirus> or <https://www.cdc.gov/coronavirus/2019-ncov/index.html>.

###